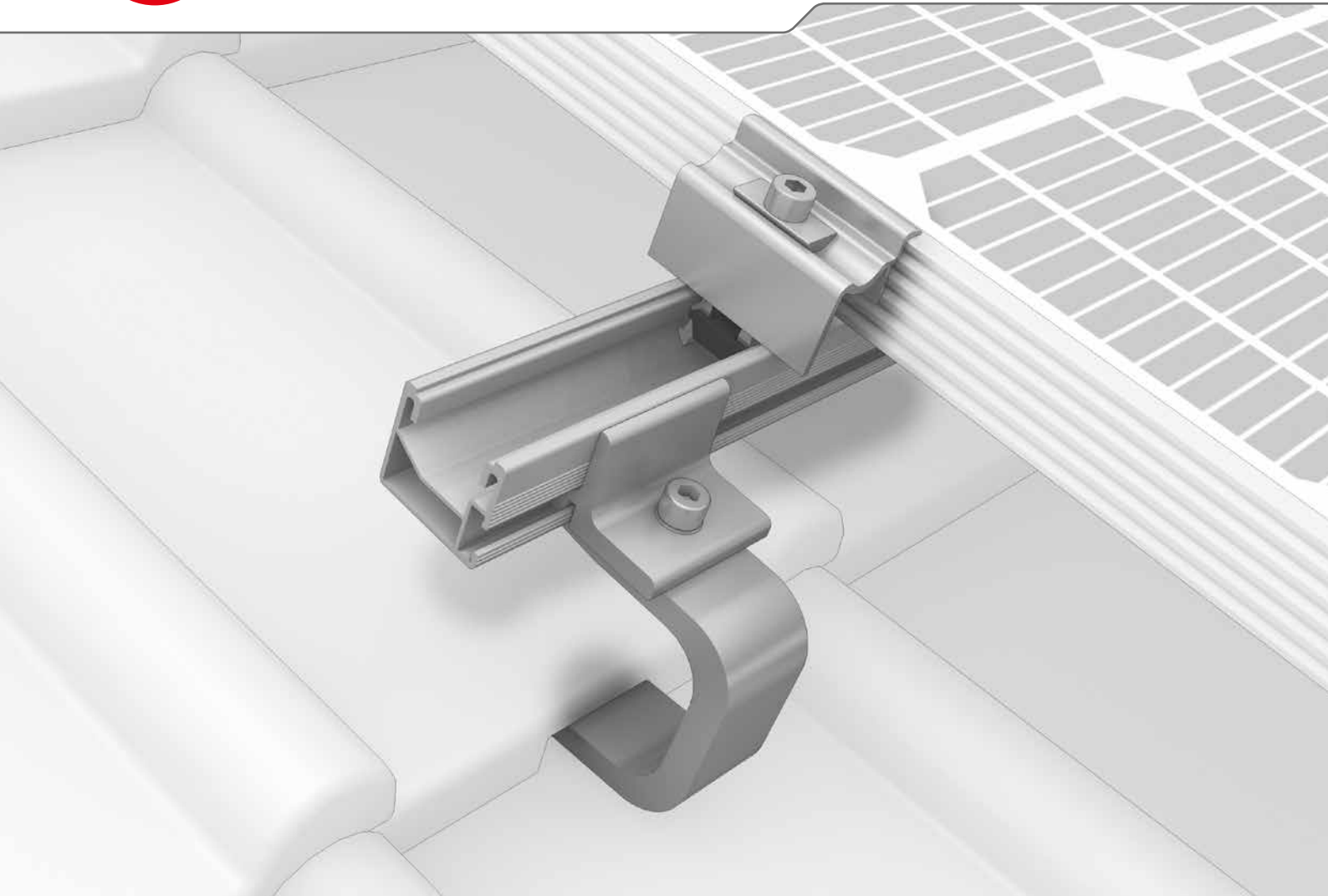




# SingleRail System



- ▶ Quick and low-cost with direct lateral connections to the rail including customised height adjustment
- ▶ Secure snap-in assembly – without needing to be screwed into the base plate
- ▶ The SingleRail in combination with CrossHook roof hooks is very durable and versatile

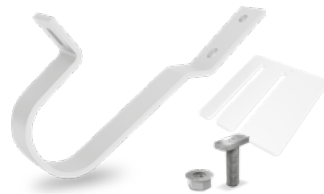


# Roof fastenings



### SingleHook 1.1

- ▶ For pantiles
- ▶ Easy height adjustment with slotted bore hole
- ▶ Also suitable for narrow rafters
- ▶ Connects directly to SingleRail



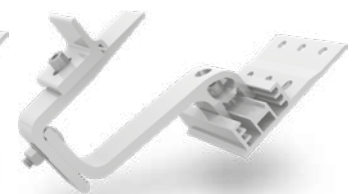
### SingleHook FT

- ▶ For flat tiles and pantiles
- ▶ Applicable on small rafters and independent from rafters
- ▶ Connects directly to SingleRail



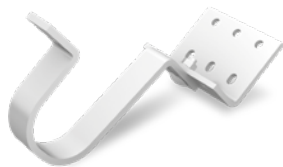
### CrossHook 3S

- ▶ For pantiles
- ▶ 3 height adjustments in the base plate
- ▶ Also suitable for narrow rafters



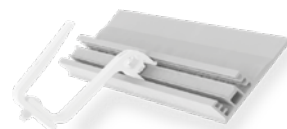
### CrossHook 4S

- ▶ For pantiles
- ▶ 3 height adjustments in the base plate
- ▶ Further height adjustment at the bracket itself.
- ▶ Also suitable for narrow rafters



### SingleHook Vario

- ▶ For flat tiles and pantiles
- ▶ Height-adjustable at rail connection and battens
- ▶ Connects directly to SingleRail



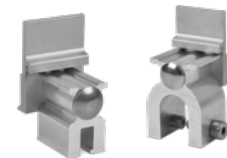
### CrossBoard

- ▶ The easy solution for nogging, skylights etc.
- ▶ Complements CrossHook 3S and 4S



### Hanger bolts SR

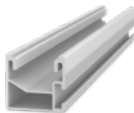
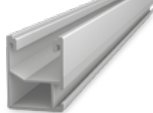
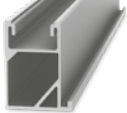
- ▶ For corrugated fibre cement roofing with wooden substructures
- ▶ With building approval

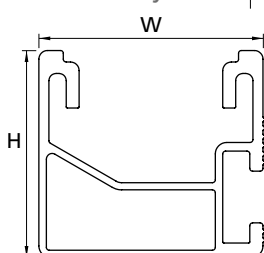


### Standing seam clamps

- ▶ For many different seam types
- ▶ Direct lateral connection

## Technical data

	SingleRail 36	SingleRail 50	SingleRail 63
Figure			
Material	Aluminium (EN AW-6063 T66)		
W = width [mm]	39.4	39	47
H = height [mm]	36	50	63
Lengths [m]	2.10/3.15/4.15/6.10	6.10	6.10
Weight [kg/m]	0.76	1.0	1.51
Second rail layer	SingleRail or SolidRail		



**For heavy loads and large spans!**